

**Relentless Innovation**  
for your diagnostic confidence

**SAMSUNG**

# Empowering Confidence and Quality in Equine Ultrasound



# Adding value to your imaging and diagnosis of equine

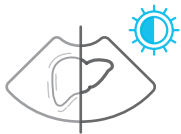
Samsung ultrasound systems for equine offer superb image quality, advanced diagnostic features, ease of use, and portability. Whether you are focusing on MSK, cardiac, abdomen, or reproduction, our ultrasound systems are specifically designed for an equine veterinarian who needs to deliver a fast and accurate diagnosis. A variety of equine ultrasound systems are developed to withstand daily use so that veterinarians can focus on the exam more efficiently and effectively.

## Sophisticated 2D and color image processing



### Provide uniform imaging performance of overall image area

S-Harmonic™ provides greater image uniformity from near to far field while reducing signal noise.



### Reduce noise to improve 2D image quality

ClearVision™ is a proprietary noise reduction filter that improves interface definition and creates sharper 2D images for optimal diagnostic performance. ClearVision also provides application-specific optimization and advanced temporal resolution in live scan mode.



### Clean up blurry areas in the image

HQ-Vision™ compensates for the natural signal distortion as sound propagates through tissue to display maximum pixel sharpness.



### Examine peripheral vessels with directional Power Doppler

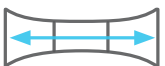
S-Flow™, a sophisticated color Doppler technology with greater sensitivity, S-Flow can detect low intensity blood flow. It enables accurate diagnosis when blood flow examination is especially difficult.

## Enriched features & interventional solutions



### Display needle tip clearly

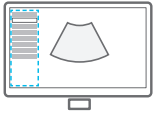
NeedleMate+™ dramatically enhances needle visualization when performing commonly used intervention procedures. Beam Steer allows the linear ultrasound image to be steered and improves needle visibility when the angle of insonation and the needle are perpendicular to each other.



### Display in extended field-of-view

Panoramic+™ imaging displays as an extended field-of-view & also supports angular scanning from linear transducer data acquisition.

# Improved workflow efficiency



## Build predefined protocols for streamlined process

EzExam+™ assigns protocols for examinations that are regularly performed in the hospital in order to reduce the number of steps that you have to go through.



## Select transducer and preset combinations in one click

QuickPreset™ allows the user to select the most common transducer and preset combinations in one click.

# Ultrasound systems for equine



## HM70 EVO

### Mobile excellence

The HM70 EVO ultrasound system is a high-performance hand-carried ultrasound system, designed to support a diverse range of applications and patients. The HM70 EVO has streamlined workflow, durability, and high resolution imaging that can be used in a variety of clinical situations.



## HS40

### Establish everyday efficiency

Samsung's advanced yet budget-friendly tools, previously exclusive to our platforms, can enhance various application exam capabilities for efficient and effective care.

#### Sophisticated 2D Image Processing

HQ-Vision™, S-Harmonic™, ClearVision, MultiVision

#### Detailed Expression of Blood Flow Dynamics

S-Flow™

#### Enriched Diagnostic Features & Interventional Solutions

ElastoScan™<sup>1, 2</sup>, Strain+<sup>1</sup>, Panoramic+, NeedleMate™

#### Enhanced Productivity and Facilitated Workflow

EzExam+™, EzCompare™, QuickScan™, QuickScan™, QuickSave

#### Ergonomics for Your Comfort

Premium Cart (Gas Lift, On Cart Power Outlets), Extended Transducer Ports, Extended Battery, Keyskin, Side Storage, Front Handle, Carrier Package, 15-inch LCD Monitor

#### Sophisticated 2D Image Processing

HQ-Vision™, S-Harmonic™, ClearVision, MultiVision

#### Detailed Expression of Blood Flow Dynamics

S-Flow™

#### Enriched Diagnostic Features & Interventional Solutions

ElastoScan™<sup>1, 2</sup>, Strain+<sup>1</sup>, Panoramic+<sup>1</sup>, NeedleMate™

#### Enhanced Productivity and Facilitated Workflow

EzExam+™, EzCompare™, QuickScan™, QuickPreset, MeasureNavigation

#### Ergonomics for Your Comfort

Adjustable Control Panel, Gas Lift, Side Storage<sup>1</sup>, Rear Tray<sup>1</sup>, Endocavity Transducer Holder<sup>1</sup>, Gel Warmer<sup>1</sup>, SSD Drive, BatteryAssist™<sup>1</sup>, Print Cover<sup>1</sup>, 21.5-inch LCD Monitor, 10.1-inch Touch Screen

1. Optional feature which may require additional purchase.

2. Strain value for ElastoScan+™ is not applicable in Canada and the United States.

# Dedicated transducers for equine



LA2-9R Vet



CA1-7AD



CA2-8AD



LN5-12



LA3-16AD



CA4-10M



PN2-4



LS6-15 <sup>a</sup>

## Secure your care

Samsung Healthcare Cybersecurity

### Bringing peace of mind to your hospital and patients

To address this emerging need for cybersecurity, Samsung provides a solution to support our customers by offering the tools to protect against cyberthreats that may compromise invaluable patient data and ultimately degrade the quality of care. Samsung's Cybersecurity Solution strives to abide by the CIA triad (Confidentiality, Integrity, and Availability) and takes a comprehensive approach to providing impeccable protection with the following pillars: Intrusion prevention, Access control, and Data protection.



#### Intrusion Prevention

Security tools (Anti-virus & Firewall)  
Windows 10



#### Access Control

Account management  
Audit log



#### Data Protection

Data encryption  
EMR/DICOM Secure Transmission

## SAMSUNG

Samsung is a registered trademark of Samsung Electronics Co., Ltd  
Boston Imaging is a subsidiary of Samsung Electronics Co.  
© 2022 Boston Imaging

1-USS-192 rev00